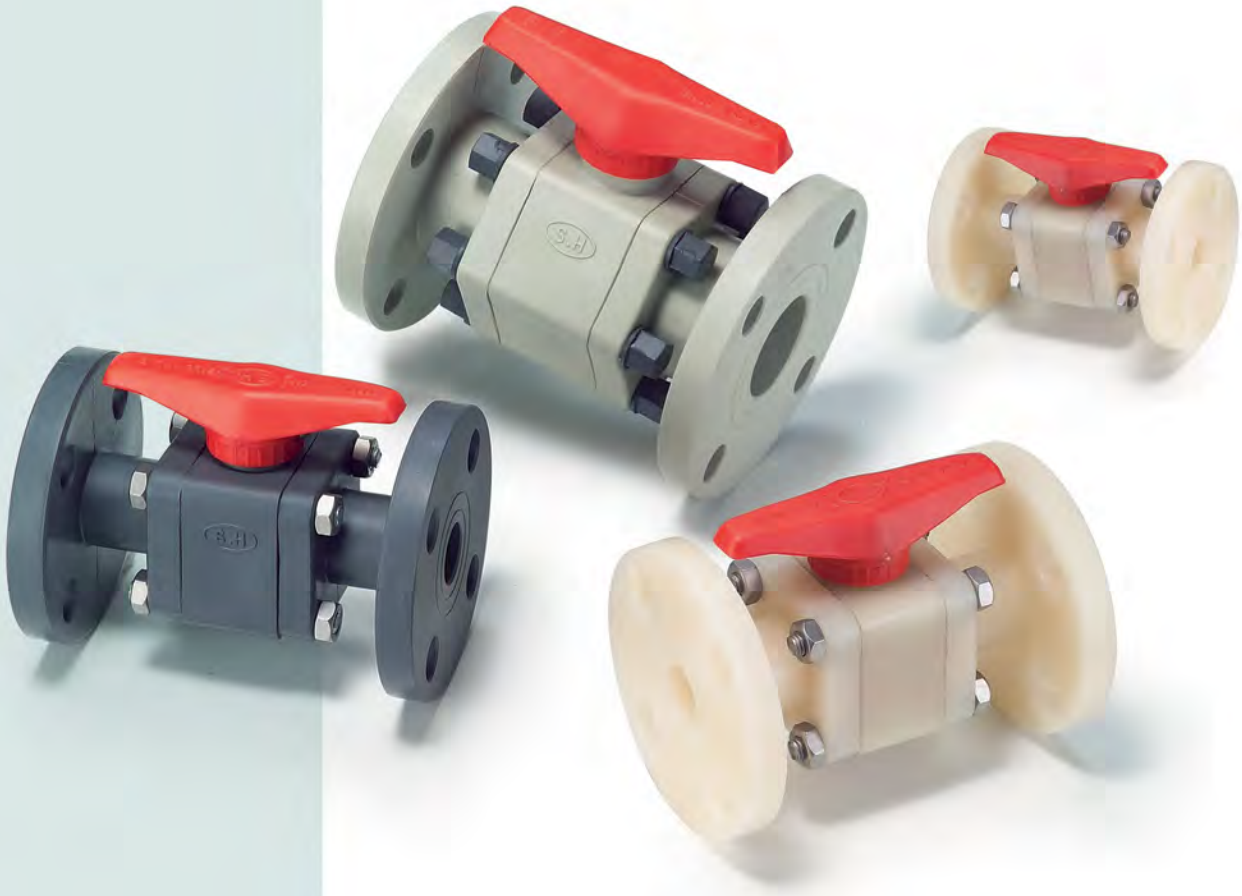




# STRONG UNION BALL VALVE



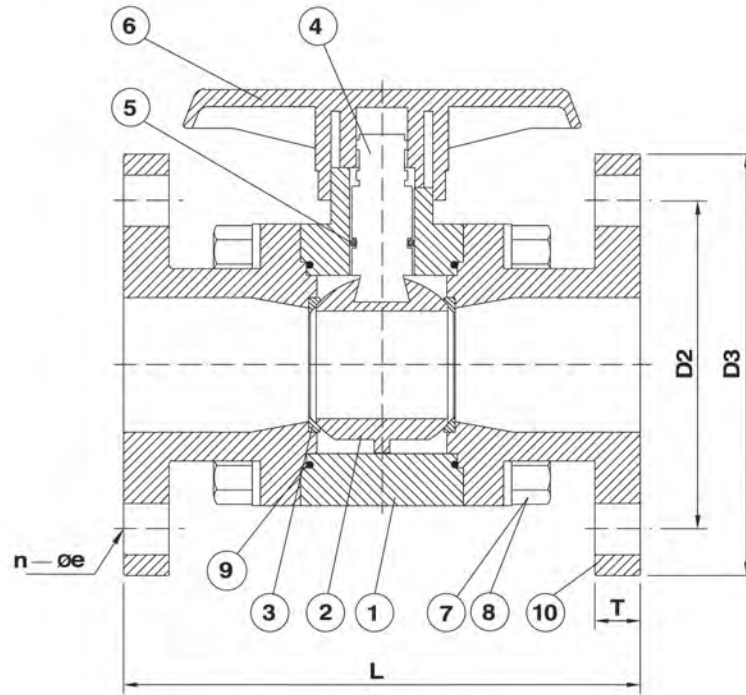
**CG Series**

**強力型球閥**

**CG300**  
**Size: DN15-DN150**

## ● MATERIALS OF CONSTRUCTION

No.	Parts	Pcs	Materials	No.	Parts	Pcs	Materials
1	Body	1	PVC, PP, PPG, PVDF	6	Handle	1	15A-100A ABS 125A-150A FC25
2	Ball	1	PVC, PP, PPG, PVDF	7	Bolt	15A-25A 4 40A-80A 6 100A 8 150A 10	Steel SUS-304 PVC COATED BRASS, 100-150 SUS304
3	Seat	2	TEFLON	8	Nut		
4	Shaft	1	PVC,PP,PPG PVDF	9	Flange O-Ring	2	EPDM, VITON
5	O-Ring	15A-32A 1 40A-150A 2	EPDM, VITON	10	Flange	2	PVC, PP, PPG, PVDF



DN15~DN150

**SPECIFICATIONS:**

1. Test Press: ① {15mm-1/2"~65mm-2 1/2"} : 15kgf/cm<sup>2</sup>(222 lb/in<sup>2</sup>)  
 ② {80mm-3"~100mm-4"} : 10kgf/cm<sup>2</sup>(148 lb/in<sup>2</sup>)  
 ③ {125mm-5"~150mm-6"} : 7kgf/cm<sup>2</sup>(105 lb/in<sup>2</sup>)

2. Working Press: ① {15mm-1/2"~65mm-2 1/2"} : 10kgf/cm<sup>2</sup>(148 lb/in<sup>2</sup>)  
 ② {80mm-3"~100mm-4"} : 7kgf/cm<sup>2</sup>(105 lb/in<sup>2</sup>)  
 ③ {125mm-5"~150mm-6"} : 5kgf/cm<sup>2</sup>(75 lb/in<sup>2</sup>)

**DIMENSIONS TABLE**

Standards Nom. size DN-inch	JIS Unit:mm						ANSI Unit:inch						DIN Unit:mm					
	D3	D2	L Flange end	n	øe	T	D3	D2	L Flange end	n	øe	T	D3	D2	L Flange end	n	øe	T
15-1/2"	95	70	142	4	15	13	3.50	2.38	5.59	4	0.63	0.51	95	65	142	4	14	13
20-3/4"	100	75	152	4	15	15	3.88	2.76	5.98	4	0.63	0.59	105	75	152	4	14	15
25-1"	125	90	170	4	19	16	4.25	3.13	6.69	4	0.67	0.63	115	85	170	4	14	16
32-1-1/4"	135	100	170	4	19	16	4.62	3.50	6.69	4	0.71	0.63	140	100	170	4	18	16
40-1-1/2"	140	105	184	4	19	18	5.00	3.88	7.24	4	0.71	0.71	150	110	184	4	18	18
50-2"	155	120	192	4	19	18	6.00	4.74	7.56	4	0.67	0.71	165	125	192	4	18	18
65-2-1/2"	175	140	216	4	19	20	7.00	5.49	8.50	4	0.75	0.78	185	145	216	4	18	20
80-3"	185	150	245	8	19	20	7.50	6.00	9.64	4	0.75	0.78	200	160	245	8	18	20
100-4"	210	175	296	8	19	23	9.00	7.50	11.65	8	0.78	0.90	220	180	296	8	18	23
125-5"	250	210	395	8	23	24	10.00	8.50	15.55	8	0.87	0.94	250	210	395	8	18	24
150-6"	280	240	395	8	23	24	11.00	9.50	15.55	8	0.87	0.94	280	240	395	8	23	24

※ 本尺表以PVC材質為基準 本表試壓值以PVC、PVDF材質為基準 PP材質試壓值為本表試壓值之70%

※ The dimension table is calculably based on PVC material.  
 The value of test pressure is calculably based on PVC PVDF materials.  
 The value of test pressure for PP material is 70% based on this table.